



**Commercial Credit Group, Inc (Mark Wenzel)**  
525 N Tryon Street, Charlotte, NC 28202 USA  
(704) 414-2456

VIN: 1NKDXPEX5CJ311240  
PO #: 15188

**2012 KENWORTH T 800**

SPECIFICATIONS	
MILEAGE	5,457
ENGINE HOURS	394
ENGINE	PACCAR MX13 12.9L 430 HP
ENG BRAKE	NO
FUEL / TANKS	DIESEL - 1 ALUM 90 GAL TOTAL
TRANSMISSION	FULLER FRO16210C 10 SPD AUTO
DRIVE OPTS	POWER STEERING, OVERDRIVE, CRUISE
REAR END	SPICER 3.73
AXLE TYPE	TRI - F 13,200 LB / R 26,000 LB
GVWR	72,200
FRAME	STEEL
SUSPENSION	SPRING
WHEELBASE	274"
TIRE SIZE	F 385/65R22.5 / R 11R22.5
WHEELS	F ALUMINUM / R ALUM/STEEL
EXTERIOR H (IN)	153
EXTERIOR W (IN)	96
EXTERIOR L (FT)	26.0
AIR COND	YES, OPERATIONAL
INTERIOR COLOR	BROWN
RADIO	AM/FM, OPERATIONAL
MIRRORS	DUAL POWER
HIGH BACK SEATS	DUAL
PASSENGER SEAT	AIR RIDE
EXTERIOR COLOR	WHITE
BUMPER	PAINTED
EXTERIOR OPTS	HEATED MIRRORS



BRAKES	
<b>LEFT FRONT</b>	<b>RIGHT FRONT</b>
20	20
<b>LEFT REAR 1</b>	<b>RIGHT REAR 1</b>
20	21
<b>LEFT REAR 2</b>	<b>RIGHT REAR 2</b>
19	21
<b>LEFT REAR 3</b>	<b>RIGHT REAR 3</b>
20	20

TIRES & WHEELS			
<b>LEFT FRONT</b>		<b>RIGHT FRONT</b>	
0 / 32 TOYO ALUMINUM		19 / 32 ALUMINUM	
<b>LEFT OUTER 1</b>	<b>LEFT INNER 1</b>	<b>RIGHT INNER 1</b>	<b>RIGHT OUTER 1</b>
10 / 32 BF GOODRICH ALUMINUM	- - -	- - -	27 / 32 KELLY ALUMINUM
<b>LEFT OUTER 2</b>	<b>LEFT INNER 2</b>	<b>RIGHT INNER 2</b>	<b>RIGHT OUTER 2</b>
22 / 32 BRIDGESTONE ALUMINUM	26 / 32 HANKOOK STEEL	21 / 32 DUNLOP STEEL	21 / 32 GOODYEAR ALUMINUM
<b>LEFT OUTER 3</b>	<b>LEFT INNER 3</b>	<b>RIGHT INNER 3</b>	<b>RIGHT OUTER 3</b>
23 / 32 BRIDGESTONE ALUMINUM	9 / 32 BRIDGESTONE STEEL	14 / 32 BRIDGESTONE STEEL	18 / 32 BRIDGESTONE ALUMINUM
<b>FRONT TIRES: 385/65R22.5</b>		<b>REAR TIRES: 11R22.5</b>	

**GENERAL OBSERVATIONS**

<b>OIL MILKY?</b>	NO	<b>LIGHTS WORK?</b>	YES - ALL
<b>OIL LEAKS?</b>	YES	<b>WIPERS WORK?</b>	YES
<b>WATER LEAKS?</b>	NO	<b>GAUGES WORK?</b>	YES - ALL
<b>OIL IN COOLANT ?</b>	NO	<b>AIR HORN WORKS?</b>	YES

CLUTCH PLAY?	OK	CITY HORN WORKS?	NO
STARTS?	YES		
DRIVES	NO	DIESEL PARTICULATE FILTER	PASS

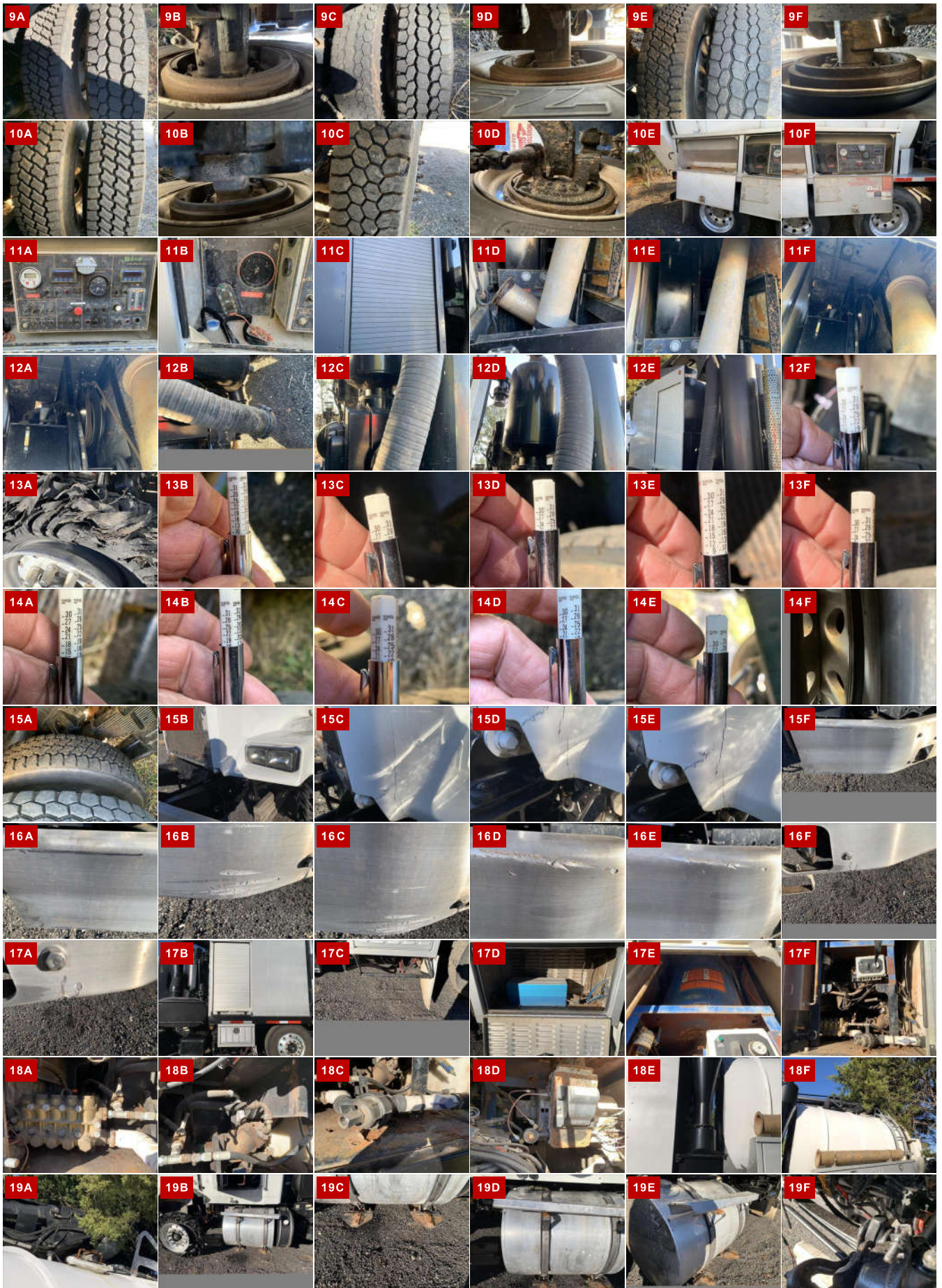
**ADDITIONAL OBSERVATIONS**

OIL PAN AND FRAME WET ON D/S OF ENGINE. D/S STEER TIRES BLOWN.

WEAR & TEAR DETAIL	
DIAGNOSTICS	ABS LIGHT ON 2 ACTIVE / 2 INACTIVE FAULTS DETECTED - (SEE ECM REPORT)
HOOD	DS FENDER AND HOOD DAMAGED AND TWISTED AND WILL NOT OPEN
STEPS	DS LOWER STEP MISSING, DS TOP STEP DENTED AND TWISTED. DS REAR STEP BENT BACKWARDS.
FRAME	PS REAR BOTTOM CORNER DENTED BENT AND SCRATCHED
LIGHTS	TOP WORK LIGHT MISSING WITH WIRES HANGING OUT. PS TOP FRONT MARKER BENT AND BROKEN WITH WIRES HANGING OUT.
SEATS	PS SEAT STAINED, DS SEAT TORN WITH TAPE ON IT.

**REPORT PHOTOS**







REPORT DOCUMENTS

Condition report only. National Inspection Services does not guarantee mechanical reliability.

© National Inspection Services  
101 W. Shrader St. Liberty, MO 64068  
[www.nationalinspect.com](http://www.nationalinspect.com)

# DIAGNOSTIC REPORT

VIN:

Model Year: 0

Manufacturer:

COMPONENT	FAULT CODES	4 TOTAL / 2 ACTIVE / 2 INACTIVE
-----------	-------------	---------------------------------

## BRAKES, POWER UNIT - J1708 ACTIVE FAULT CODES (2)

ECM Serial Number:	Fault Description: Wheel Sensor ABS Axle 1 Right	SID 2
ECM Model:	FMI Description: Special Instructions	FMI: 14
	Count: 1	

	Fault Description: Wheel Sensor ABS Axle 1 Left	SID 1
	FMI Description: Special Instructions	FMI: 14
	Count: 1	

## INACTIVE FAULT CODES (2)

	Fault Description: Power Supply	SID 251
	FMI Description: Current Below Normal Or Open Circuit	FMI: 5
	Count: 1	

	Fault Description: SAE J1939 Data Link	SID 231
	FMI Description: Special Instructions	FMI: 14
	Count: 1	

## PARAMETERS