



National Inspection Services

Report: 284857
03/19/2025

Commercial Credit Group, Inc (Mark Wenzel)
525 N Tryon Street, Charlotte, NC 28202 USA
(704) 414-2456

VIN: 5KKPAEFG4KPKC3773
Stock #: 15191

2019 WESTERN STAR 4900

SPECIFICATIONS	
MILEAGE	222,946
ENGINE HOURS	12,012
ENGINE	CUMMINS X15 14.9L 505 HP
ENG BRAKE	YES
FUEL / TANKS	DIESEL - 1 STEEL 100 GAL TOTAL
TRANSMISSION	EATON RTLO-16918B 18 SPD MANUAL
DRIVE OPTS	POWER STEERING, CRUISE
REAR END	MERITOR 4.30
AXLE TYPE	TRI - F 22,000 LB / R 60,000 LB
GVWR	82,000
FRAME	STEEL
SUSPENSION	AIR RIDE
WHEELBASE	311"
TIRE SIZE	F 425/65 22.5 / R 11R22.5
WHEELS	F ALUMINUM / R ALUMINUM
AIR COND	YES, OPERATIONAL
INTERIOR COLOR	BLACK/TAN
RADIO	AM/FM / BLUETOOTH, OPERATIONAL
HIGH BACK SEATS	DUAL
PASSENGER SEAT	AIR RIDE
EXTERIOR COLOR	WHITE
BUMPER	CHROME
EXTERIOR OPTS	HEATED MIRRORS



BRAKES	
LEFT FRONT	RIGHT FRONT
24	24
LEFT REAR 1	RIGHT REAR 1
COVERED	COVERED
LEFT REAR 2	RIGHT REAR 2
COVERED	COVERED
LEFT REAR 3	RIGHT REAR 3
COVERED	COVERED



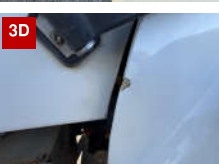

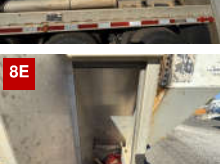
TIRES & WHEELS			
LEFT FRONT 23 / 32 CONTINENTAL ALUMINUM		RIGHT FRONT 17 / 32 BRIDGESTONE ALUMINUM	
LEFT OUTER 1	LEFT INNER 1	RIGHT INNER 1	RIGHT OUTER 1
10 / 32 BRIDGESTONE ALUMINUM	18 / 32 BRIDGESTONE ALUMINUM	14 / 32 GOODYEAR ALUMINUM	23 / 32 GOODYEAR ALUMINUM
LEFT OUTER 2	LEFT INNER 2	RIGHT INNER 2	RIGHT OUTER 2
18 / 32 - ALUMINUM	16 / 32 - ALUMINUM	23 / 32 BRIDGESTONE ALUMINUM	17 / 32 BRIDGESTONE ALUMINUM
LEFT OUTER 3	LEFT INNER 3	RIGHT INNER 3	RIGHT OUTER 3
16 / 32 MICHELIN ALUMINUM	14 / 32 MICHELIN ALUMINUM	10 / 32 GOODYEAR ALUMINUM	10 / 32 GOODYEAR ALUMINUM
FRONT TIRES: 425/65 22.5		REAR TIRES: 11R22.5	

GENERAL OBSERVATIONS			
OIL MILKY?	NO	LIGHTS WORK?	YES - ALL
OIL LEAKS?	YES	WIPERS WORK?	YES
WATER LEAKS?	NO	GAUGES WORK?	YES - ALL
OIL IN COOLANT?	NO	AIR HORN WORKS?	YES
CLUTCH PLAY?	OK	CITY HORN WORKS?	YES
STARTS?	YES		

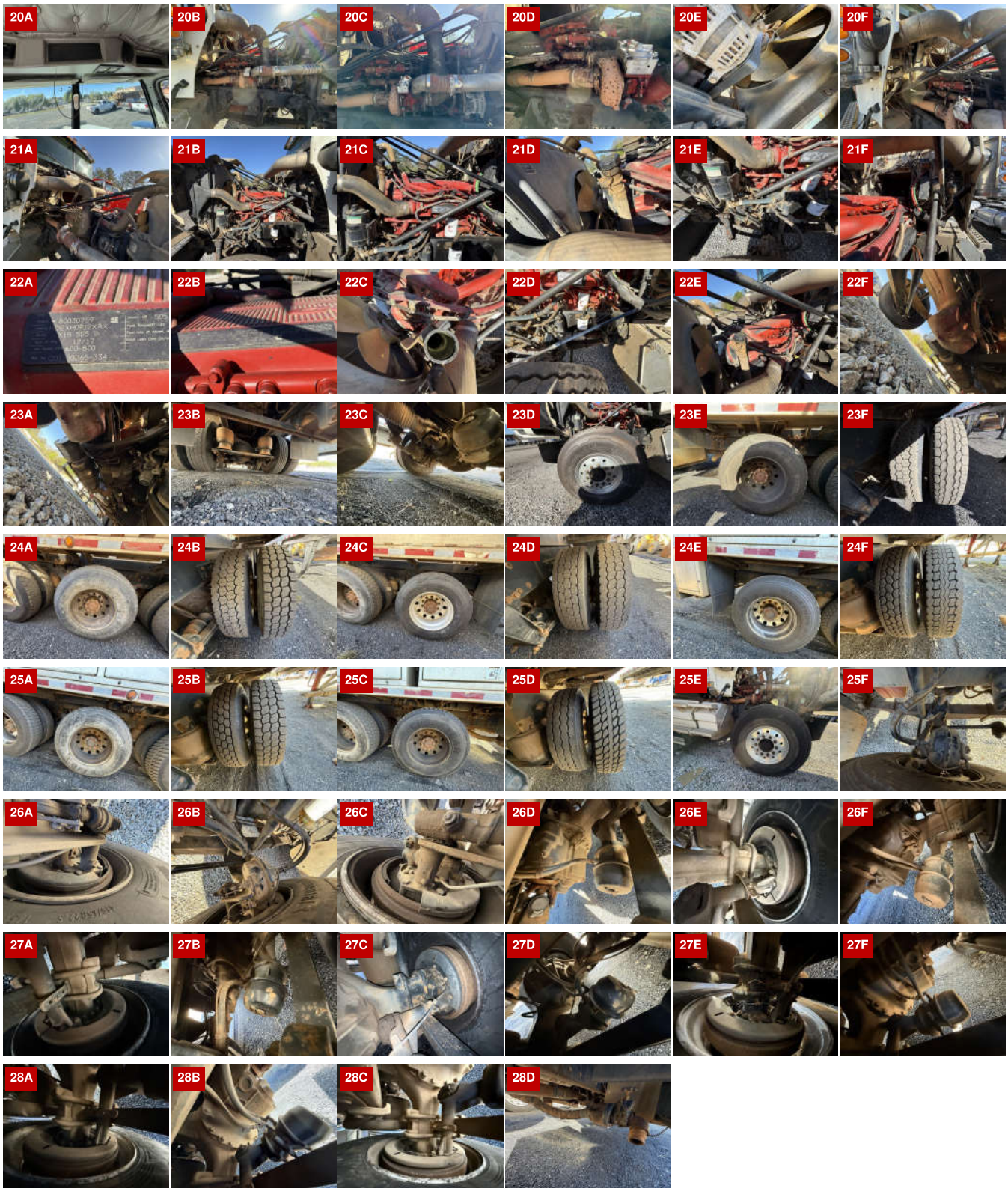
DRIVES	YES	DIESEL PARTICULATE FILTER	PASS
--------	-----	---------------------------	------

ADDITIONAL OBSERVATIONS	
ENGINE OIL PAN IS LEAKING AROUND THE OIL PAN GASKET	

WEAR & TEAR DETAIL	
DIAGNOSTICS	NO ACTIVE WARNING INDICATORS
SHOCKS	RUSTED IN REAR
TANKS	HAVE MULTIPLE RUST SPOTS ON BOTH SIDES
BUMPER	P/S CORNER BENT
BREATHER	P/S BREATHER DENTED
HOOD	P/S FENDERS CRACKED AND CHIPPED
DASH	VENT DAMAGED IN THE CENTER OF THE DASH

REPORT PHOTOS					
					
					
					
					
					
					
					
					





Condition report only. National Inspection Services does not guarantee mechanical reliability.

© National Inspection Services
 101 W. Shrader St. Liberty, MO 64068
www.nationalinspect.com