



## National Inspection Services

Report: 284858  
03/19/2025

**Commercial Credit Group, Inc (Mark Wenzel)**  
525 N Tryon Street, Charlotte, NC 28202 USA  
(704) 414-2456

VIN: 5KKPAEFG8KPKS6664  
Stock #: 15192

### 2019 WESTERN STAR 4900

SPECIFICATIONS	
MILEAGE	173,244
ENGINE HOURS	8,358
ENGINE	CUMMINS X15 14.9L 505 HP
ENG BRAKE	YES
FUEL / TANKS	DIESEL - 1 STEEL 100 GAL TOTAL
TRANSMISSION	EATON RTLO-16918B 18 SPD MANUAL
DRIVE OPTS	POWER STEERING, CRUISE
REAR END	MERITOR 4.30
AXLE TYPE	TRI - F 20,000 LB / R 57,000 LB
GVWR	77,000
FRAME	STEEL
SUSPENSION	AIR RIDE
WHEELBASE	311"
TIRE SIZE	F 425/65 22.5 / R 12R 22.5
WHEELS	F ALUMINUM / R ALUMINUM
AIR COND	YES, OPERATIONAL
INTERIOR COLOR	BLACK/TAN
RADIO	AM/FM / BLUETOOTH, OPERATIONAL
HIGH BACK SEATS	DUAL
PASSENGER SEAT	AIR RIDE
EXTERIOR COLOR	WHITE
BUMPER	CHROME
EXTERIOR OPTS	HEATED MIRRORS



BRAKES	
<b>LEFT FRONT</b>	<b>RIGHT FRONT</b>
30	30
<b>LEFT REAR 1</b>	<b>RIGHT REAR 1</b>
COVERED	COVERED
<b>LEFT REAR 2</b>	<b>RIGHT REAR 2</b>
30	30
<b>LEFT REAR 3</b>	<b>RIGHT REAR 3</b>
COVERED	COVERED

TIRES & WHEELS			
<b>LEFT FRONT</b>		<b>RIGHT FRONT</b>	
18 / 32 BRIDGESTONE ALUMINUM		16 / 32 BRIDGESTONE ALUMINUM	
<b>LEFT OUTER 1</b>	<b>LEFT INNER 1</b>	<b>RIGHT INNER 1</b>	<b>RIGHT OUTER 1</b>
16 / 32 FIRESTONE ALUMINUM	19 / 32 FIRESTONE ALUMINUM	21 / 32 MICHELIN ALUMINUM	21 / 32 MICHELIN ALUMINUM
<b>LEFT OUTER 2</b>	<b>LEFT INNER 2</b>	<b>RIGHT INNER 2</b>	<b>RIGHT OUTER 2</b>
23 / 32 BRIDGESTONE ALUMINUM	22 / 32 BRIDGESTONE ALUMINUM	13 / 32 FIRESTONE ALUMINUM	16 / 32 FIRESTONE ALUMINUM
<b>LEFT OUTER 3</b>	<b>LEFT INNER 3</b>	<b>RIGHT INNER 3</b>	<b>RIGHT OUTER 3</b>
21 / 32 FIRESTONE ALUMINUM	18 / 32 FIRESTONE ALUMINUM	9 / 32 FIRESTONE ALUMINUM	17 / 32 FIRESTONE ALUMINUM
<b>FRONT TIRES:</b> 425/65 22.5		<b>REAR TIRES:</b> 12R 22.5	

GENERAL OBSERVATIONS			
<b>OIL MILKY?</b>	NO	<b>LIGHTS WORK?</b>	YES - ALL
<b>OIL LEAKS?</b>	NO	<b>WIPERS WORK?</b>	YES
<b>WATER LEAKS?</b>	NO	<b>GAUGES WORK?</b>	YES - ALL
<b>OIL IN COOLANT?</b>	NO	<b>AIR HORN WORKS?</b>	YES
<b>CLUTCH PLAY?</b>	OK	<b>CITY HORN WORKS?</b>	YES
<b>STARTS?</b>	YES		

DRIVES	YES	DIESEL PARTICULATE FILTER	PASS
--------	-----	---------------------------	------

# WEAR & TEAR DETAIL

DIAGNOSTICS	NO ACTIVE WARNING INDICATORS
TANKS	HAS MULTIPLE RUST SPOTS ON BOTH SIDES
BUMPER	BOTH SIDES ARE BENT
TIRES	1 TIRE BELOW 10/32

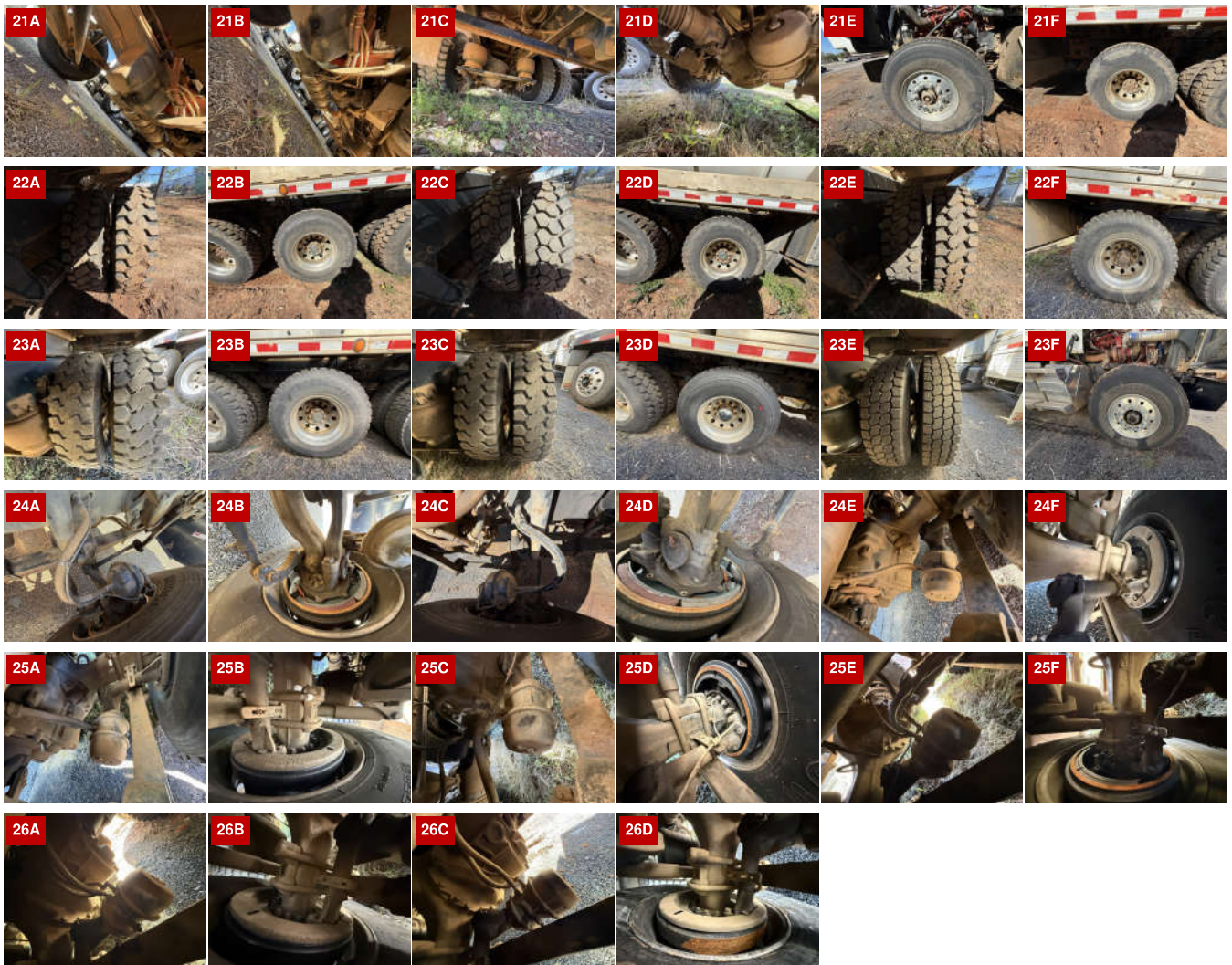
# REPORT PHOTOS











Condition report only. National Inspection Services does not guarantee mechanical reliability.

&copy National Inspection Services  
 101 W. Shrader St. Liberty, MO 64068  
[www.nationalinspect.com](http://www.nationalinspect.com)