



Commercial Credit Group, Inc (Mark Wenzel)
525 N T ryon Street, Charlotte, NC 28202 USA
(704) 414-2456

VIN: 1XPBDP9X4LD669390

2020 PETERBILT 579

SPECIFICATIONS	
ENGINE	PACCAR MX13 12.9L 455 HP
ENG BRAKE	YES
ENG SERIAL	Y210884
FUEL / TANKS	DIESEL - 2 ALUM
EXHAUST	SINGLE
EXTERNAL BREATHERS	SINGLE
TRANSMISSION	AUTO
DRIVE OPTS	POWER STEERING, OVERDRIVE, CRUISE
WET LINE	YES
AXLE TYPE	TANDEM - F 12,000 LB / R 19,000 LB
GVWR	50,000
FRAME	SINGLE
SUSPENSION	AIR RIDE
TIRE SIZE	295/75/22.5
WHEELS	F ALUMINUM / R ALUMINUM
WHEEL 5TH	MANUAL
AIR COND	YES, NOT OPERATIONAL
AUX POWER UNIT?	YES, NOT OPERATIONAL
DUAL BUNK	YES
INTERIOR COLOR	TAN
RADIO	AM/FM / BLUE, NOT OPERATIONAL
MIRRORS	DUAL POWER
HIGH BACK SEATS	DUAL
PASSENGER SEAT	AIR RIDE
EXTERIOR COLOR	GREEN
BUMPER	CHROME
EXTERIOR OPTS	HEATED MIRRORS, FULL FAIRINGS
COLLISION AVOIDANCE?	YES



BRAKES	
LEFT FRONT	RIGHT FRONT
15	15
LEFT REAR 1	RIGHT REAR 1
19	19
LEFT REAR 2	RIGHT REAR 2
18	19

TIRES & WHEELS			
LEFT FRONT		RIGHT FRONT	
18 / 32 MICHELIN ALUMINUM		13 / 32 MICHELIN ALUMINUM	
LEFT OUTER 1	LEFT INNER 1	RIGHT INNER 1	RIGHT OUTER 1
8 / 32 ROADMASTER ALUMINUM	4 / 32 ROADMASTER ALUMINUM	13 / 32 ROADMASTER ALUMINUM	5 / 32 ROADMASTER ALUMINUM
LEFT OUTER 2	LEFT INNER 2	RIGHT INNER 2	RIGHT OUTER 2
14 / 32 MICHELIN ALUMINUM	14 / 32 BRIDGESTONE ALUMINUM	11 / 32 BRIDGESTONE ALUMINUM	15 / 32 MICHELIN ALUMINUM
FRONT TIRES: 295/75/22.5		REAR TIRES: 295/75/22.5	

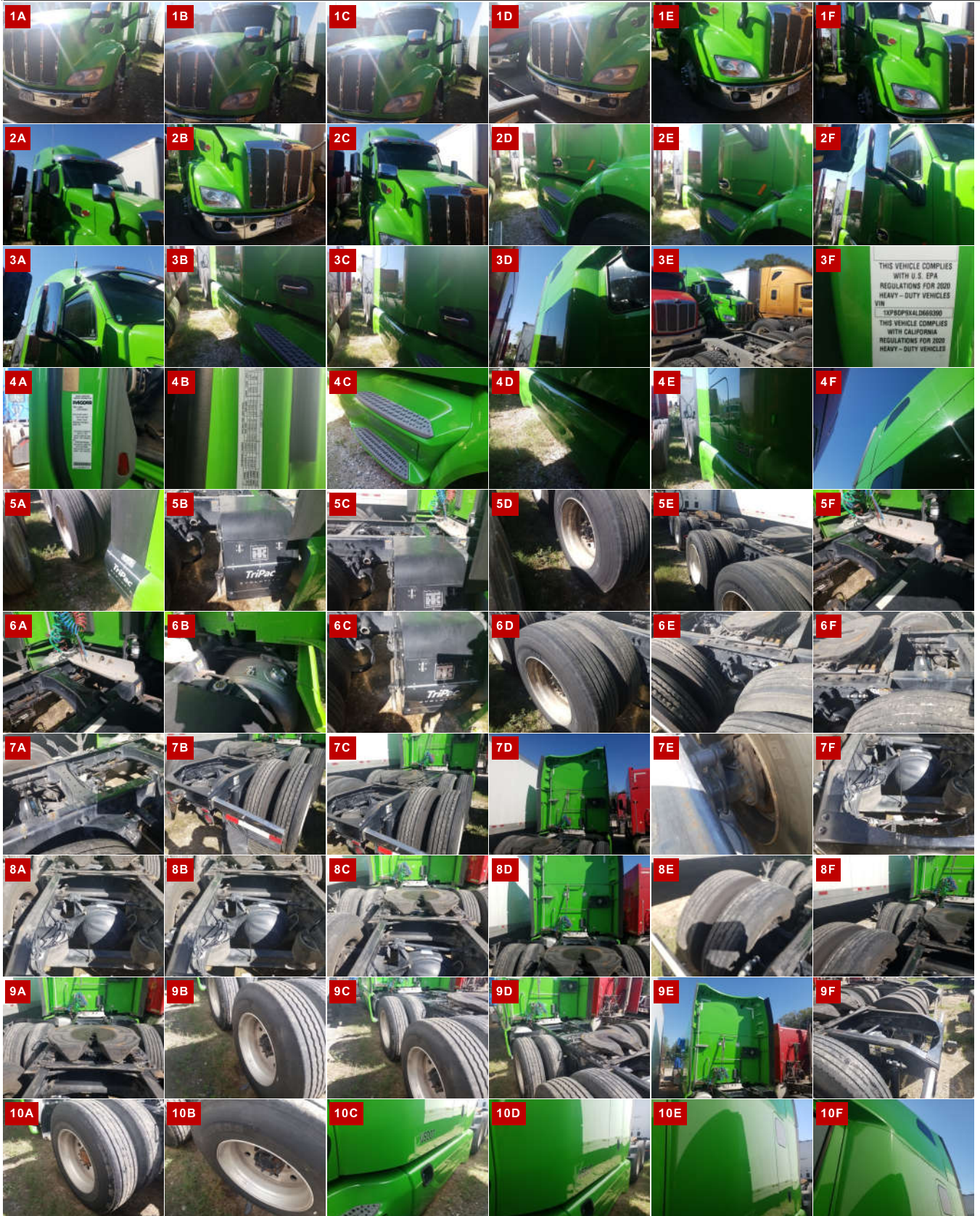
GENERAL OBSERVATIONS

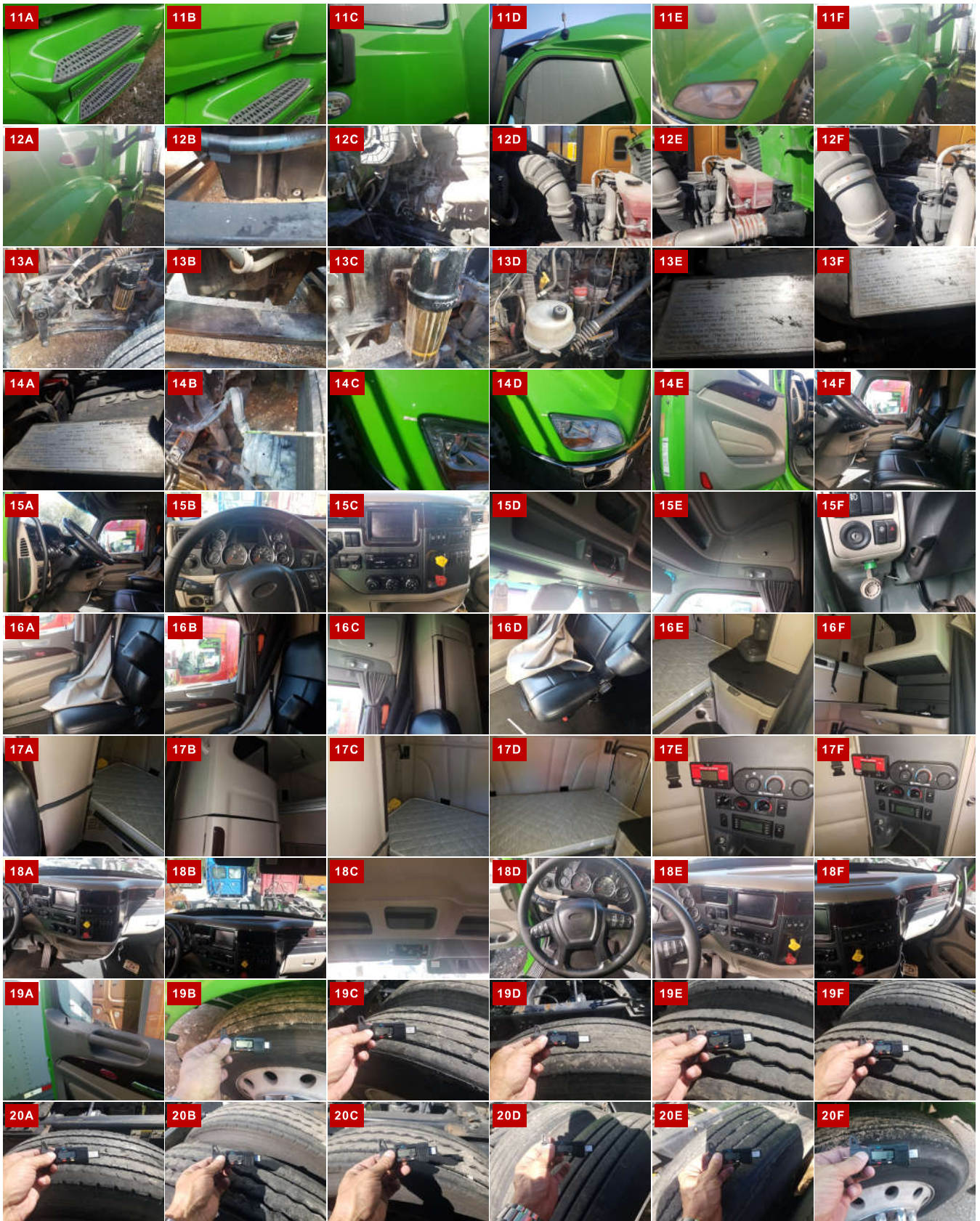
OIL MILKY?	NA	LIGHTS WORK?	NA
OIL LEAKS?	YES	WIPERS WORK?	NA
WATER LEAKS?	NO	GAUGES WORK?	NA
OIL IN COOLANT ?	NO	AIR HORN WORKS?	NA
CLUTCH PLAY?	NA	CITY HORN WORKS?	NA
STARTS?	NO		
DRIVES	NO		

WEAR & TEAR DETAIL

DIAGNOSTICS	NO POWER COULD NOT RUN OR CHECK ALL FUNCTIONS
TIRES	3 TIRES UNDER 10/32
STEERING WHEEL	SURFACES HAVE WEAR. EMBLEM MISSING FROM THE CENTER
FENDER	P/S FENDER SCRAPED BEHIND HEADLIGHT

REPORT PHOTOS





Condition report only. National Inspection Services does not guarantee mechanical reliability.

© National Inspection Services
101 W. Shrader St. Liberty, MO 64068
www.nationalinspect.com